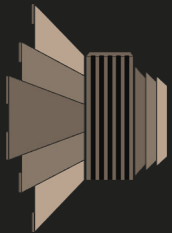


Indoor Wall Panels
Outdoor Wall Panels
Composite Decking
Achtitectural Beamz
Pergolaz






Deck & Wall




Deckz & Wallz
Specialising in Indoor and
Outdoor Wall Panelling
& Composite Decking


 www.deckzandwallz.co.za

  @deckz_and_wallz

 info@deckzandwallz.co.za

 08610 DECKZ (33259)

 066 184 3374

 **Available in South Africa and**
neighbouring countries.



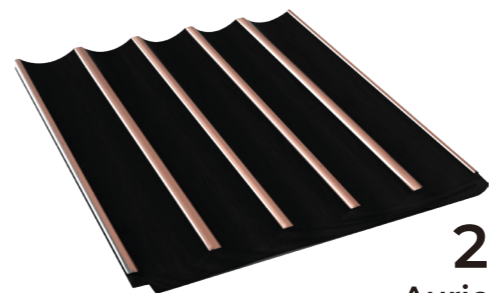
CONTENTS PAGE

DESCRIPTION	PAGE
Indoor Wall Panelling	
Auric	4-5
Artistry	6-7
Opulence	8-9
Grandeur	10-11
Acousticz	12-13
Elementz - Natural Wood	14-17
Elementz - Luxury Stone	18-19
Elementz - Fine Fabrics	20-21
Elementz Spectrum	22-23
Elementz Accessories	24
Art Blockz	26-29
Interior Mouldingz	30-33
Outdoor Wall Panelling	
Vertex	35
Pinnacle	36-37
Composite Decking	
Meridian	39
Paragon	40
Installation Accessories	41
Beamz and Pergolaz	42-43
Product Features	44
Installation Guide	45-49
Warranty Information	50

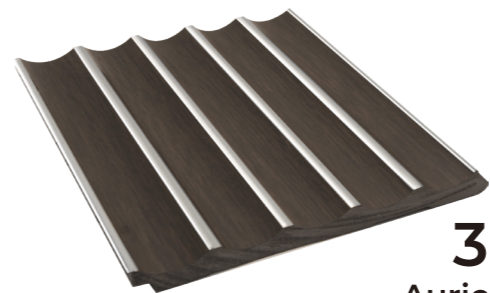
INDOOR
WALL
PANELS



1
Auric
Ivory Birch



2
Auric
Rosa Birch



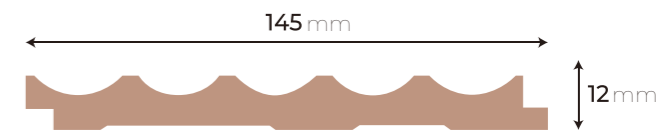
3
Auric
Silver Birch

Product Specifications:

Composition	Percentage of Content
HIPS	10%
EPS	86.99%
Color Masterbatch	1%
Foil	<=0.01%
Flexibilizer	2%



Product Dimensions:

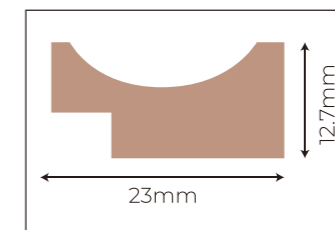


Dimensions	145 x 12 mm
Standard Length	2900 mm
Mass /m	0.58 kg
Mass /Length	1.68 kg
Panels /m ²	2.38
Coverage /m	6.90



Optional Extras:

Indoor Edging Strip



1 Auric
Ivory Birch

2 Auric
Rosa Birch

3 Auric
Silver Birch

Auric

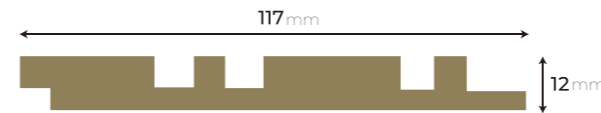


Product Specifications:

Composition	Percentage of Content
HIPS	10%
EPS	86.99%
Color Masterbatch	1%
Foil	<=0.01%
Flexibilizer	2%



Product Dimensions:



Dimensions	117 x 12 mm
Standard Length	2900 mm
Mass /m	0.47 kg
Mass /Length	1.36 kg
Panels /m ²	2.95
Coverage /m	8.55



Optional Extras:

Indoor Edging Strip



1
Artistry
Walnut



2
Artistry
Chestnut

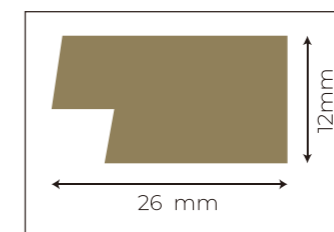
Artistry



1
Artistry
Walnut



2
Artistry
Chestnut





OPULENCE
NATURAL CAN
BE PAINTED OR
SPRAYED TO
COMPLEMENT ANY
SETTING

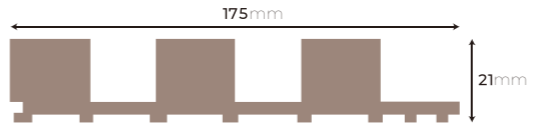
Opulence - Natural

Product Specifications:

Composition	Percentage of Content
PVC Powder	40%
Calcium Powder	58%
Additives	2%

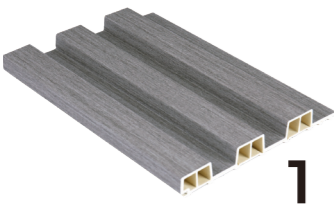
.....

Product Dimensions:



Dimensions	175 x 21 mm
Standard Length	2900 mm
Mass /m	1.08 kg
Mass /Length	3.13 kg
Panels /m ²	1.97
Coverage /m	5.71

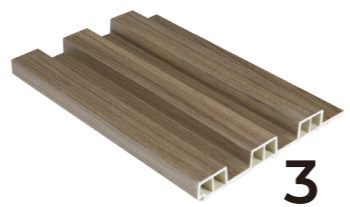
- 1** Opulence Ash Grey
- 2** Opulence Crete
- 3** Opulence Dahoma
- 4** Opulence Monza
- 5** Opulence Pecan
- 6** Opulence White Oak
- 7** Opulence Black
- 8** Opulence Natural



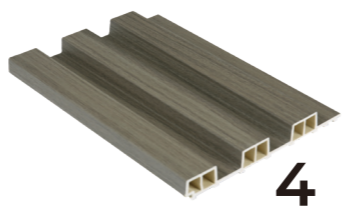
1
Opulence
Ash Grey



2
Opulence
Crete



3
Opulence
Dahoma



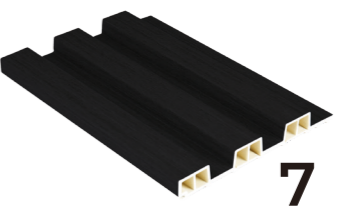
4
Opulence
Monza



5
Opulence
Pecan



6
Opulence
White Oak

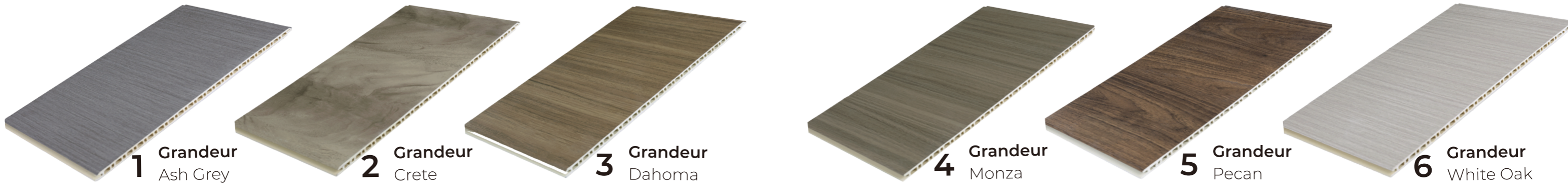


7
Opulence
Black



8
Opulence
Natural

Opulence

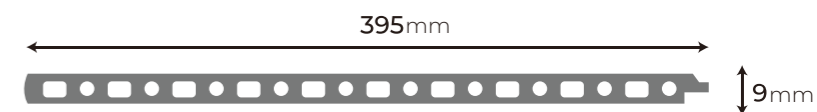


Product Specifications:

Composition	Percentage of Content
PVC Powder	40%
Calcium Powder	58%
Additives	2%

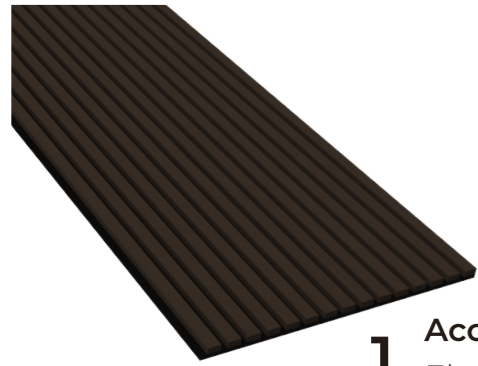
.....

Product Dimensions:

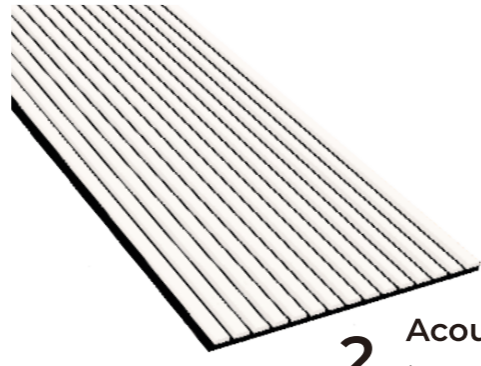


Dimensions	395 x 9 mm
Standard Length	2900 mm
Mass /m	2.09 kg
Mass /Length	6.06 kg
Panels /m ²	0.87
Coverage /m	2.53

Grandeur



1 Acousticz
Ebony



2 Acousticz
Ivory

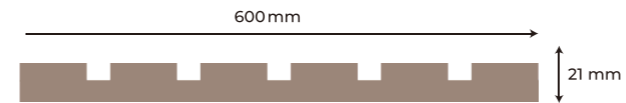
Acousticz

Product Specifications:

Composition	Percentage of Content
MDF Board	49%
PET Polyester Fiber	44%
Paper Foil	7%



Product Dimensions:



Dimensions	600 x 21 mm
Standard Length	3000 mm
Mass /m	4.52 kg
Mass /Length	13.56 kg
Panels /m ²	0.56
Coverage /m	1.67

COMBINED ELEGANCE WITH FUNCTIONALITY. THESE PANELS HAVE SOUND INSULATING PROPERTIES WHILE MAINTAINING A MODERN AESTHETIC DESIGN.



Element₂ Fluted

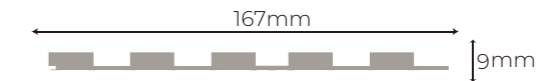
NATURAL WOOD

Product Specifications:

Composition	Percentage of Content
Resin Powder	50%
Calcium Powder	30%
Wood Powder	15%
Other Adjuvants	5%

.....

Product Dimensions:



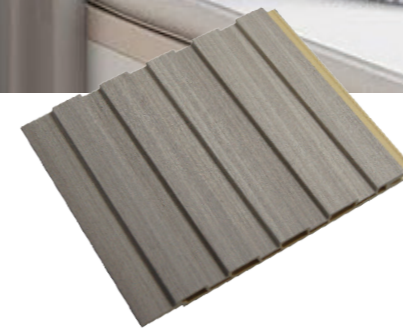
Dimensions	167 x 9 mm
Standard Length	2900 mm
Mass /m	0.71 kg
Mass /Length	2.06 kg
Panels /m ²	2.06
Coverage /m	5.98



1 Natural Wood Fluted
Shale Oak



2 Natural Wood Fluted
Pecan



3 Natural Wood Fluted
Beige Walnut



4 Natural Wood Fluted
Amati Walnut



1 Natural Wood
Shale Oak



2 Natural Wood
Pecan



3 Natural Wood
Beige Walnut



4 Natural Wood
Amati Walnut



AVAILABLE IN
4 DIFFERENT
WIDTHS.

Element₂ Flat

NATURAL WOOD

Product Dimensions:

Dimensions	200 x 9 mm
Standard Length	2900 mm
Mass /m	1.35 kg
Mass /length	3.92 kg
Panels /m ²	1.72
Coverage /m	5

Dimensions	400 x 9 mm
Standard Length	2900 mm
Mass /m	2.70 kg
Mass /length	7.83 kg
Panels /m ²	0.86
Coverage /m	2.5

Dimensions	600 x 9 mm
Standard Length	2900 mm
Mass /m	4.04 kg
Mass /length	11.72 kg
Panels /m ²	0.57
Coverage /m	1.67

Dimensions	1200 x 9 mm
Standard Length	2900 mm
Mass /m	8.10 kg
Mass /length	23.49 kg
Panels /m ²	0.28
Coverage /m	0.83

TO BE USED WITH
ELEMENTZ ALUMINIUM
ACCESSORIES - TO
CREATE A UNIQUE &
CUSTOM DESIGN.

Element₂ Flat & Fluted

LUXURY STONE

Product Specifications:

Composition	Percentage of Content
Resin Powder	50%
Calcium Powder	30%
Wood Powder	15%
Other Adjuvants	5%

Product Dimensions:



Dimensions	167 x 9 mm
Standard Length	2900 mm
Mass /m	0.71 kg
Mass /Length	2.06 kg
Panels /m ²	2.06
Coverage /m	5.98



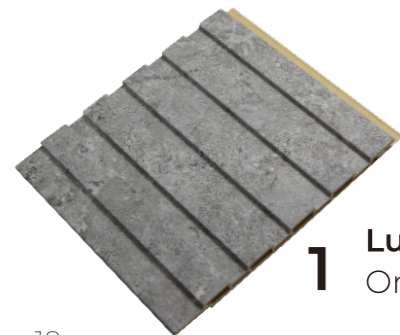
Product Dimensions:

Dimensions	200 x 9 mm
Standard Length	2900 mm
Mass /m	1.35 kg
Mass /length	3.92 kg
Panels /m ²	1.72
Coverage /m	5

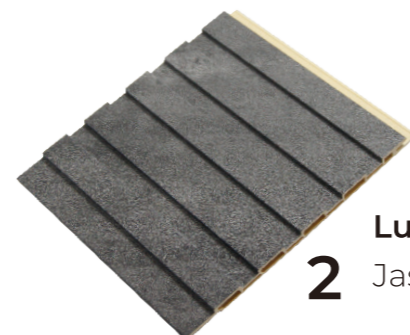
Dimensions	400 x 9 mm
Standard Length	2900 mm
Mass /m	2.70 kg
Mass /length	7.83 kg
Panels /m ²	0.86
Coverage /m	2.5

Dimensions	600 x 9 mm
Standard Length	2900 mm
Mass /m	4.04 kg
Mass /length	11.72 kg
Panels /m ²	0.57
Coverage /m	1.67

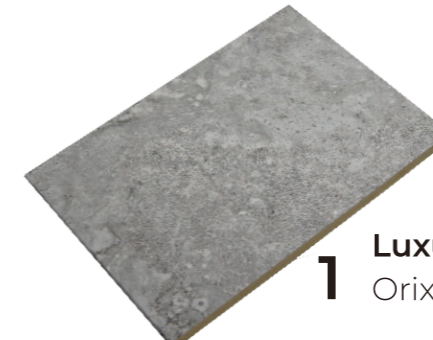
Dimensions	1200 x 9 mm
Standard Length	2900 mm
Mass /m	8.10 kg
Mass /length	23.49 kg
Panels /m ²	0.28
Coverage /m	0.83



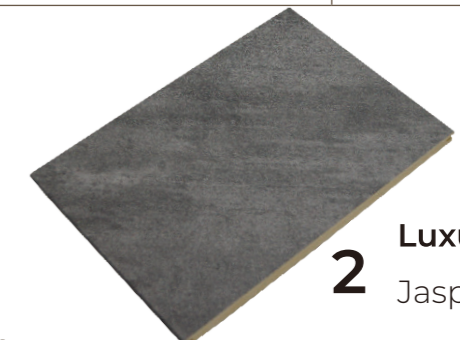
1 Luxury Stone Fluted
Orix



2 Luxury Stone Fluted
Jasper



1 Luxury Stone Flat
Orix



2 Luxury Stone Flat
Jasper

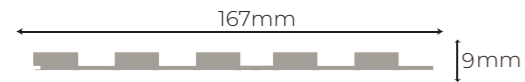
Element₂ Flat & Fluted

FINE FABRIC

Product Specifications:

Composition	Percentage of Content
Resin Powder	50%
Calcium Powder	30%
Wood Powder	15%
Other Adjuvants	5%

Product Dimensions:



Dimensions	167 x 9 mm
Standard Length	2900 mm
Mass /m	0.71 kg
Mass /Length	2.06 kg
Panels /m ²	2.06
Coverage /m	5.98



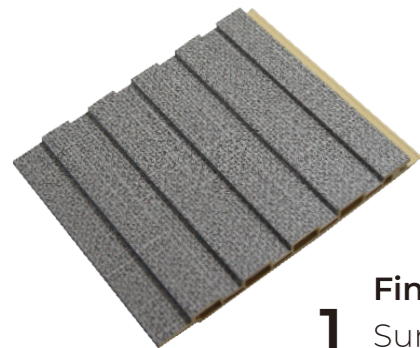
Product Dimensions:

Dimensions	200 x 9 mm
Standard Length	2900 mm
Mass /m	1.35 kg
Mass /length	3.92 kg
Panels /m ²	1.72
Coverage /m	5

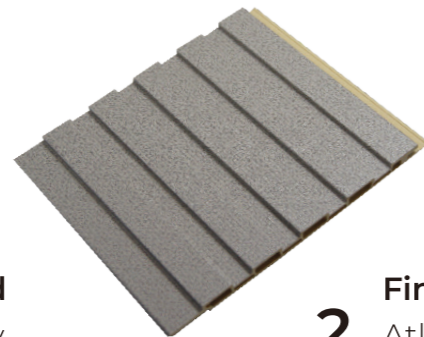
Dimensions	400 x 9 mm
Standard Length	2900 mm
Mass /m	2.70 kg
Mass /length	7.83 kg
Panels /m ²	0.86
Coverage /m	2.5

Dimensions	600 x 9 mm
Standard Length	2900 mm
Mass /m	4.04 kg
Mass /length	11.72 kg
Panels /m ²	0.57
Coverage /m	1.67

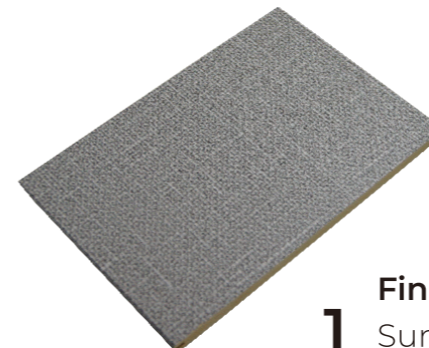
Dimensions	1200 x 9 mm
Standard Length	2900 mm
Mass /m	8.10 kg
Mass /length	23.49 kg
Panels /m ²	0.28
Coverage /m	0.83



1 Fine Fabric Fluted
Summit Dark Grey



2 Fine Fabric Fluted
Atlanta Light Grey



1 Fine Fabric Flat
Summit Dark Grey



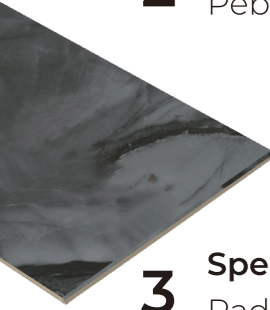
2 Fine Fabric Flat
Atlanta Light Grey

Element₂ Spectrum

1 Spectrum
Galaxy



2 Spectrum
Pebble



3 Spectrum
Radium



4 Spectrum
Riveira



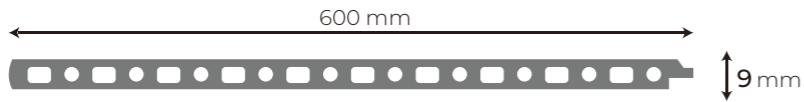
5 Spectrum
Whisper



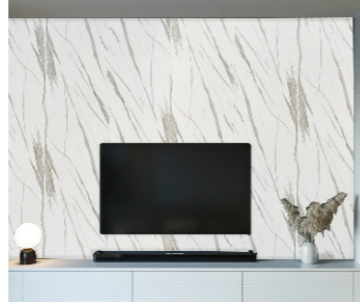
Product Specifications:

Composition	Percentage of Content
PVC Powder	40%
Calcium Powder	58%
Additives	2%

Product Dimensions:



Dimensions	600 x 9 mm
Standard Length	2900 mm
Mass /m	4.04 kg
Mass /Length	11.72 kg
Panels /m ²	0.57
Coverage /m	1.67

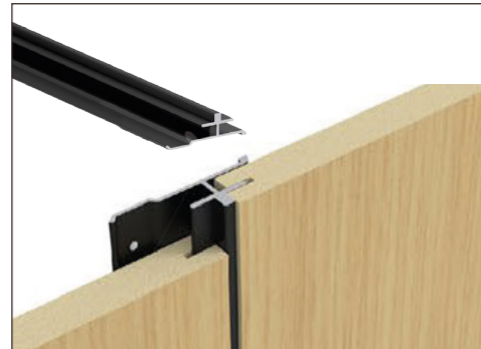


Element₂ Accessories

1 Concealed Joiner
Black



4 Exposed Joiner
Black



2 Flat Joiner
Black



5 Corner Joiner
Black

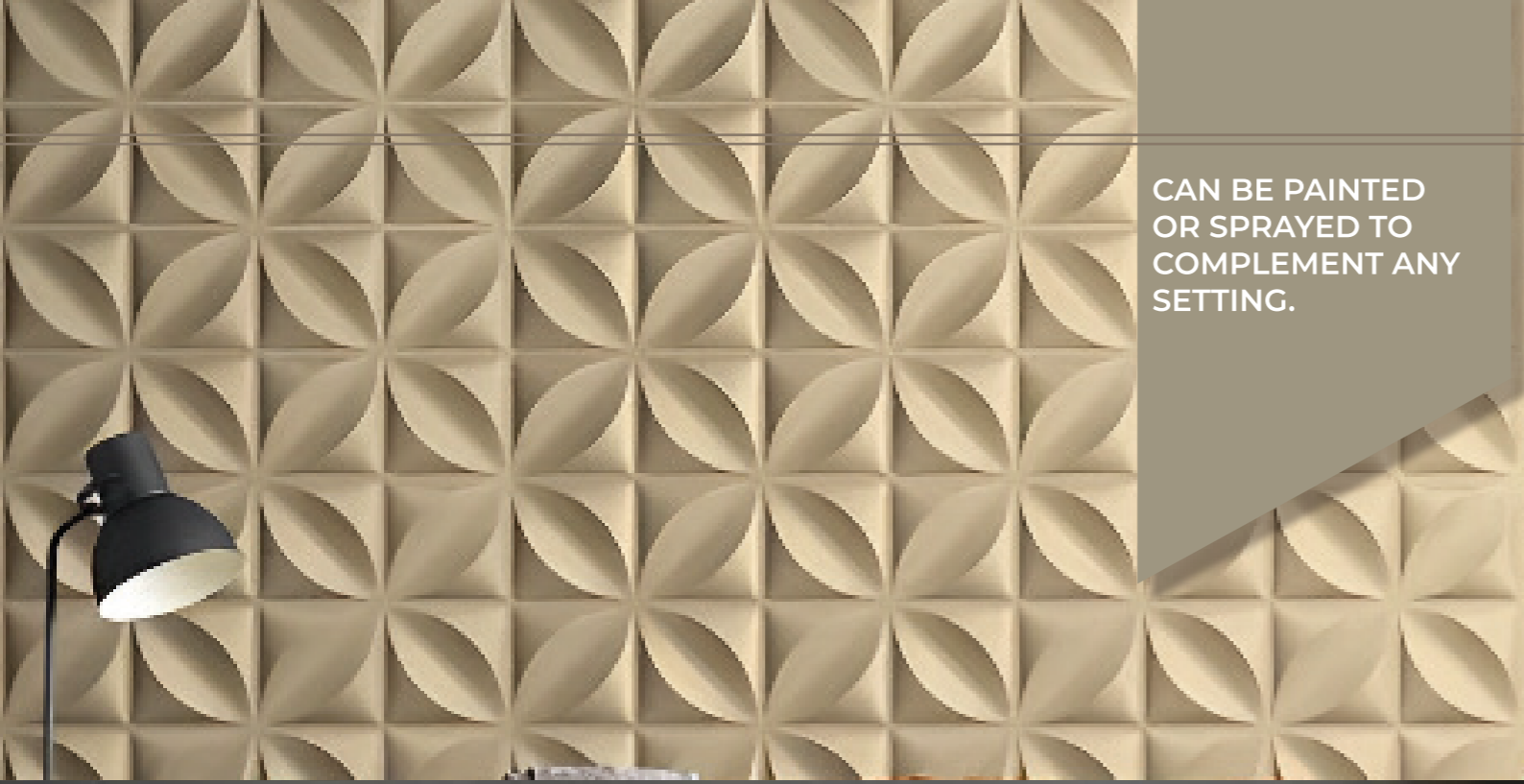


3 Edge Joiner
Black



Customization of Aluminium profiles allow panels to be placed within a unique and decorative design, adding a distinctive characteristic of the space in which it is used.





CAN BE PAINTED OR SPRAYED TO COMPLEMENT ANY SETTING.



Product Specifications:

Composition	Percentage of content
PVC	98.70%
Monostearin	1%
Titanium Oxide	0.10%
CAST	0.10%
TOS	0.10%



Product Dimensions:

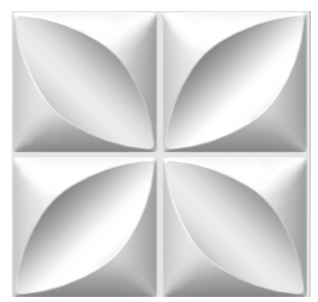
Dimensions	500 x 500 mm
Standard Length	500 mm
Raw material thickness	1 mm
Embossed thickness	27 mm
Net weight	0.33 kg
Panels /m ²	0.25



1 Art Blockz
Diamond



2 Art Blockz
Petal



Dimensions	500 x 500 mm
Standard Length	500 mm
Raw material thickness	1 mm
Embossed thickness	20 mm
Net weight	0.33 kg
Panels /m ²	0.25



Art Block₂

3 Art Blockz
Vintage



Product Dimensions:

Dimensions	500 x 500 mm
Standard Length	500 mm
Raw material thickness	1 mm
Embossed thickness	10 mm
Net weight	0.33 kg
Panels /m ²	0.25

.....

4 Art Blockz
Wave



Dimensions	500 x 500 mm
Standard Length	500 mm
Raw material thickness	1 mm
Embossed thickness	11 mm
Net weight	0.33 kg
Panels /m ²	0.25

.....

5 Art Blockz
Prism



Dimensions	500 x 500 mm
Standard Length	500 mm
Raw material thickness	1 mm
Embossed thickness	32 mm
Net weight	0.33 kg
Panels /m ²	0.25

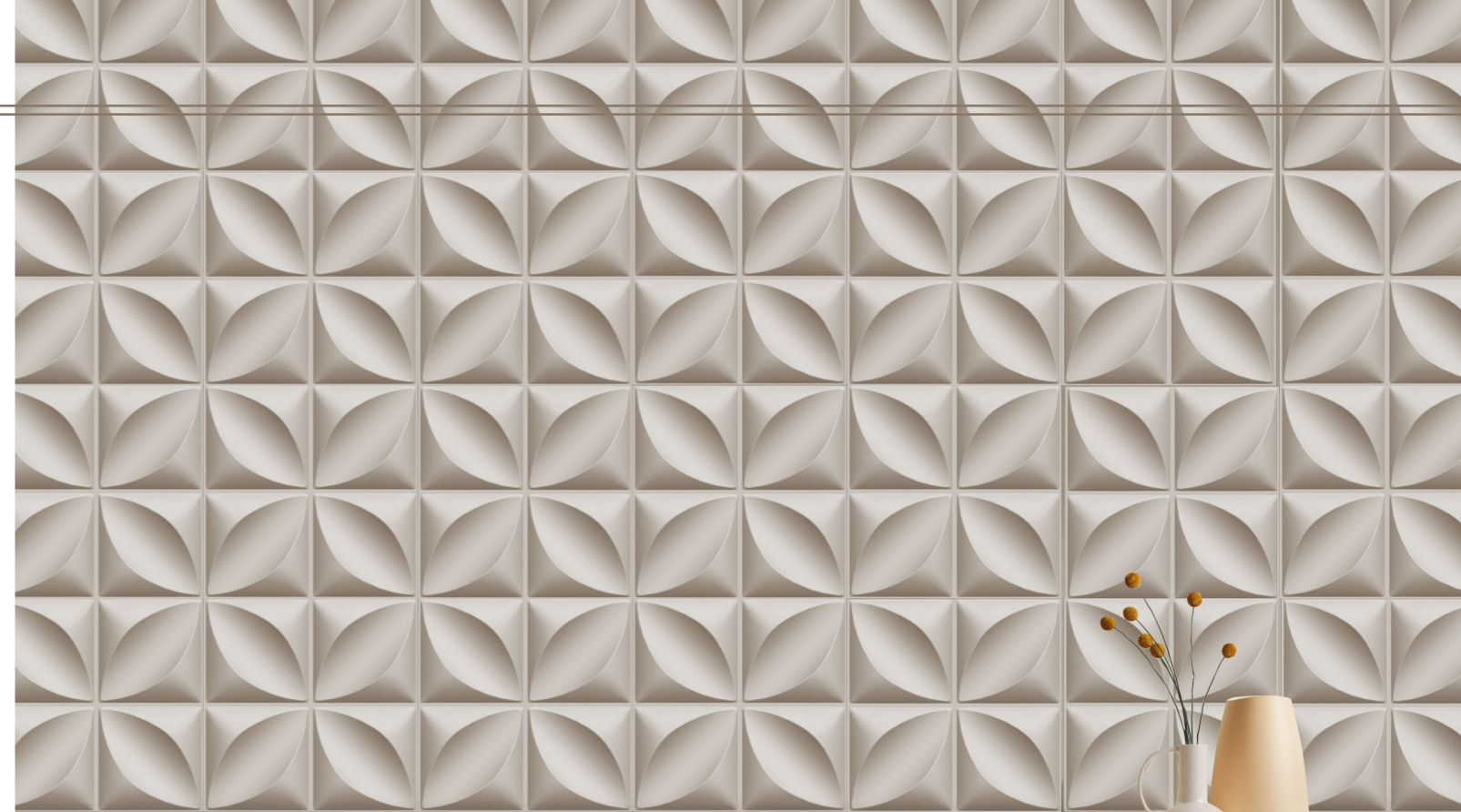
.....

6 Art Blockz
Vector



Dimensions	500 x 500 mm
Standard Length	500 mm
Raw material thickness	1 mm
Embossed thickness	21 mm
Net weight	0.33 kg
Panels /m ²	0.25

.....



Product Specifications:

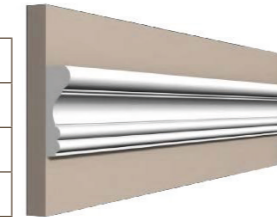
Composition	Percentage of Content
HIPS	82%
GPPS	13%
Color Masterbatch	3%
Flexibilizer	2%

.....

Chair Rail₂

Product Dimensions:

Dimensions	85 x 26 mm
Standard Length	2400 mm
Mass /m	0.54 kg
Mass /Length	15.95 kg
Code	CR07



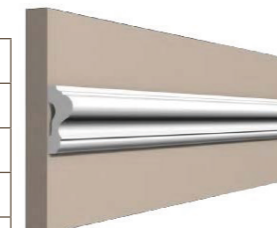
.....

Dimensions	41 x 20 mm
Standard Length	2400 mm
Mass /m	0.24 kg
Mass /Length	15.95 kg
Code	CR04



.....

Dimensions	60 x 26 mm
Standard Length	2400 mm
Mass /m	0.35 kg
Mass /Length	15.95 kg
Code	CR06



.....

CAN BE PAINTED
OR SPRAYED TO
COMPLEMENT ANY
SETTING.



Dimensions	37 x 17 mm
Standard Length	2400 mm
Mass /m	0.16 kg
Mass /Length	15.95 kg
Code	CR01



Dimensions	43 x 18 mm
Standard Length	2400 mm
Mass /m	0.17 kg
Mass /Length	15.95 kg
Code	CR05



Dimensions	40 x 18 mm
Standard Length	2400 mm
Mass /m	0.20 kg
Mass /Length	15.95 kg
Code	CR02



Dimensions	40 x 10 mm
Standard Length	2400 mm
Mass /m	0.15 kg
Mass /Length	15.95 kg
Code	CR03



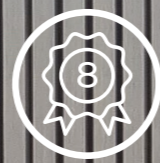
Dimensions	62 x 25 mm
Standard Length	2400 mm
Mass /m	0.42 kg
Mass /Length	15.95 kg
Code	IMLM01



Dimensions	120 x 45 mm
Standard Length	2400 mm
Mass /m	0.70 kg
Mass /Length	15.95 kg
Code	IMLM02

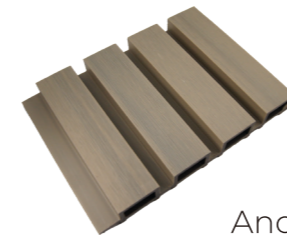


Ambient lighting accessory for the perfect finishing touch.



8 Year
Warranty

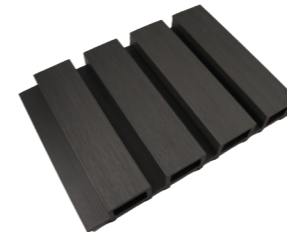
OUTDOOR
WALL
PANELS



1
Vertex
Ancient Wood



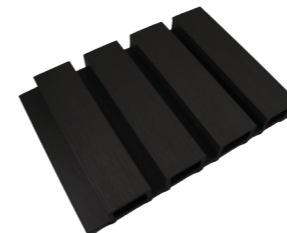
2
Vertex
Rosewood



3
Vertex
Silver Grey



4
Vertex
Teak



5
Vertex
Black

Vertex

Product Specifications:

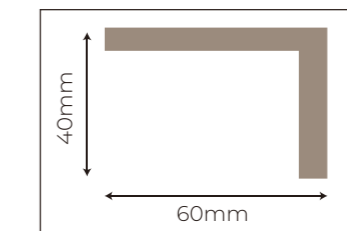
Composition	Percentage of Content
Wood Flour	60%
Recycled PE	30%
Additives: Colourants Anti-oxidants Anti-Ultraviolet Agent Lubricants etc.	10%

Product Dimensions:

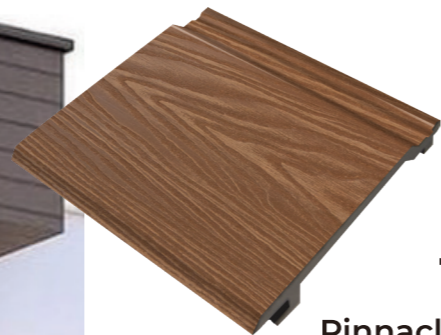


Dimensions	205 x 26 mm
Standard Length	2900 mm
Mass /m	2.86 kg
Mass /Length	8.29 kg
Panels /m ²	1.68
Coverage /m	4.88

Optional Extras:
Outdoor Edging Strip



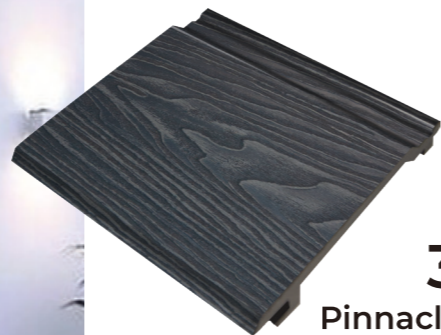
- 1** Vertex Ancient Wood
- 2** Vertex Rosewood
- 3** Vertex Silver Grey
- 4** Vertex Teak
- 5** Vertex Black



1
Pinnacle
Cedar



2
Pinnacle
Coffee



3
Pinnacle
Light Grey

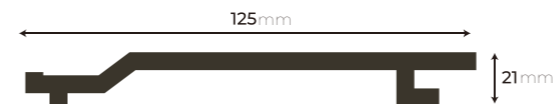
Pinnacle

Product Specifications:

Composition	Percentage of Content
Wood Flour	60%
Recycled PE	30%
Additives: Colourants Anti-oxidants Anti-Ultraviolet Agent Lubricants etc.	10%



Product Dimensions:

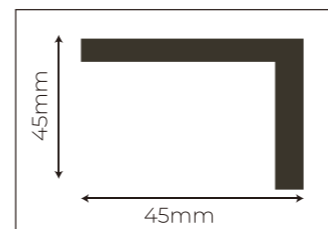


Dimensions	125 x 21 mm
Standard Length	2900 mm
Mass /m	1.70 kg
Mass /Length	4.93 kg
Panels /m ²	2.76
Coverage /m	8



Optional Extras:

Outdoor Edging Strip



- 1** Pinnacle Cedar
- 2** Pinnacle Coffee
- 3** Pinnacle Light Grey



Pinnacle - Cedar



8 Year
Warranty



8 Year
Warranty

COMPOSITE
DECKING

Embossed Decking:

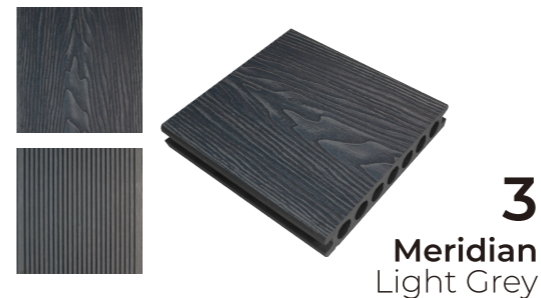
Dual sided pattern extrusion for your preferred pattern of installation.



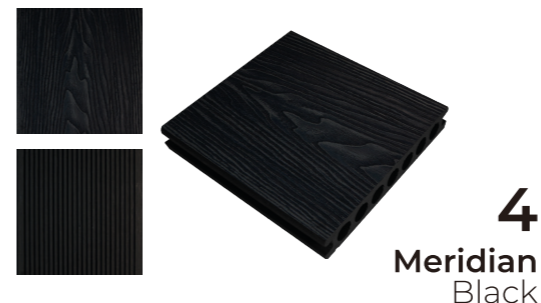
1
Meridian
Cedar



2
Meridian
Coffee



3
Meridian
Light Grey

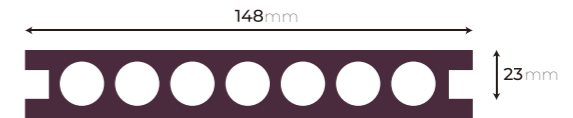


4
Meridian
Black

Product Specifications for Meridian & Paragon:

Composition	Percentage of Content
Wood Flour	60%
Recycled PE	30%
Additives: Colourants Anti-oxidants Anti-Ultraviolet Agent Lubricants etc.	10%

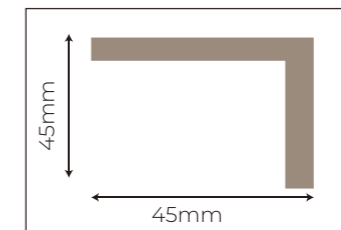
Product Dimensions for Meridian & Paragon:



Dimensions	148 x 23 mm
Standard Length	5800 mm
Mass /m	2.75 kg
Mass /Length	15.95 kg
Panels /m ²	1.17
Coverage /m	6.76

Optional Extras:

Outdoor Edging Strip



- 1** Meridian Cedar
- 2** Meridian Coffee
- 3** Meridian Light Grey
- 4** Meridian Black

Meridian
Page 39



8 Year
Warranty



Optional Extras:

Outdoor Edging Strip
60 x 40 mm

1 Paragon
Ancient Wood

2 Paragon
Rosewood

3 Paragon
Silver Grey

4 Paragon
Teak

5 Paragon
Maple

6 Paragon
Grey



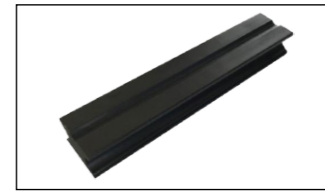
Co-Extrusion Decking:

Dual sided colour extrusion for your preferred colour of installation.

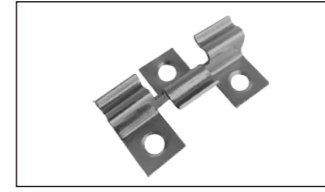
Paragon



Installation Accessories:



Support/Keel
2900x40x25mm



Stainless Steel Clips/
Spacer Clips



Stainless Steel Starter
Clips



Stainless Steel Screws
4 x 30mm



Stainless Steel Expansion
Screws/Plug and Screw
8 x 60mm



1
Beamz 60x40
Teak

2
Beamz 60x40
Ancient Wood

3
Beamz 60x40
Rosewood

4
Beamz 60x40
Black

5
Beamz 60x40
Silver Grey



1
Beamz 98x48
Teak



2
Beamz 98x48
Ancient Wood



3
Beamz 98x48
Rosewood



4
Beamz 98x48
Black



5
Beamz 98x48
Silver Grey

Beamz & Pergolaz



8
8 Year
Warranty



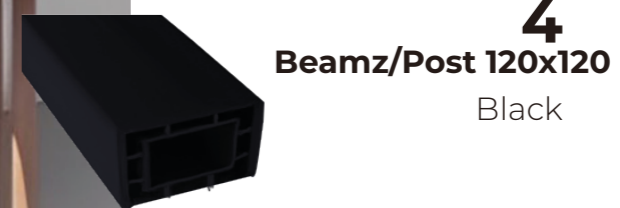
1
Beamz/Post 120x120
Teak



2
Beamz/Post 120x120
Ancient Wood



3
Beamz/Post 120x120
Rosewood

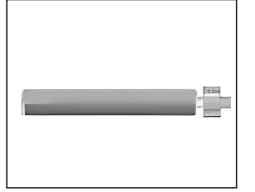


4
Beamz/Post 120x120
Black



5
Beamz/Post 120x120
Silver Grey

1 Installation Accessories:



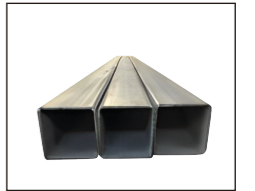
Expansion Screw
8x80mm



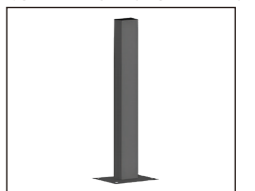
Tenon



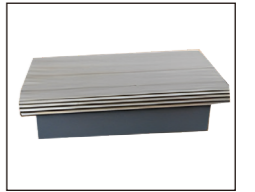
Beamz Joint



Beamz Steel Tube
1.5mm and 3mm thickness



Beamz Steel Base
700mm and 1500mm lengths



End Caps

Dimensions	60x40 / 98x48 / 120x120 mm
Standard Length	2900mm
Mass /m	0.98 / 2.63 / 7.75 kg
Mass /Length	2.84 / 7.6 / 22.48 kg

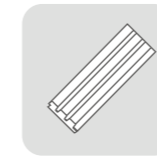
PRODUCT FEATURES

	Indoor PS	Indoor MDF	Indoor PVC	Outdoor WPC
Waterproof 	✓	N/A	✓	✓
Easy to Install 	✓	✓	✓	✓
Anti-moth 	✓	✓	✓	✓
Eco-friendly 	✓	✓	✓	✓
Scratch Resistant 	✓	✓	✓	✓
Non-porous 	✓	✓	✓	✓
Non-formaldehyde 	✓	✓	✓	✓
Fire Rated 	N/A	N/A	✓	✓
Easy to Clean 	✓	✓	✓	✓
Sound Proof 	N/A	✓	N/A	N/A
Weather Rated 	N/A	N/A	N/A	✓
Anti-corrosion 	N/A	N/A	N/A	✓

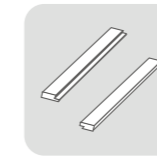
INSTALLATION GUIDE

Indoor Wall Panelling- Auric, Artistry, Opulence & Grandeur

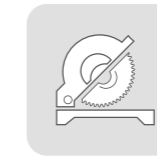
Equipment Needed



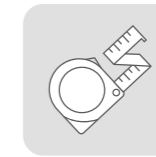
Wall Panelling



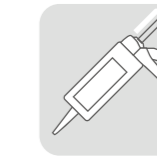
Coordinating Moulds



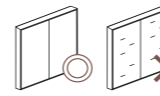

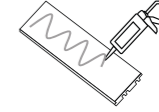
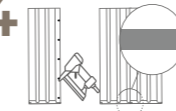
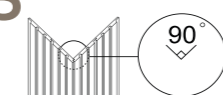
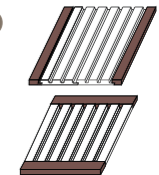
Circular Saw



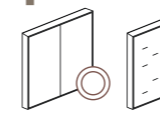
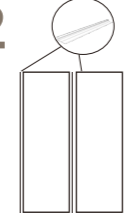
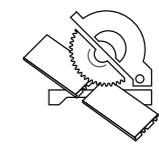
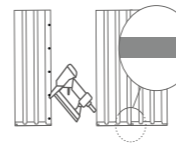
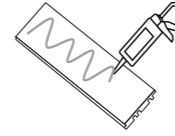

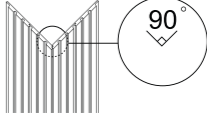
Tape Measure



Nail Free Glue

<p>1  Preparation of surface: A plastered or plywood surface is suggested for panel installation. Ensure that wallpapers are removed prior to installation.</p>	<p>2  A circular saw is recommended for cutting/resizing panels.</p>	<p>3  Thereafter apply our quick dry, nail free Deckz & Wallz adhesive to the back of the panel surface.</p>
<p>4  Apply to desired wall in either a horizontal or vertical orientation as preferred.</p>	<p>5  For corners, grooves should be aligned at a 90° angle.</p>	<p>6  Co-ordinating moulds can be used as edging to seal off any open edges of the last panel. If screws are used to support the panels eg.on ceilings - panels need to be predrilled to avoid breaking.</p>

Elementz Indoor Wall Panelling

<p>1  Preparation of surface: A plastered or plywood surface is suggested for panel installation. Ensure that wallpapers are removed prior to installation.</p>	<p>2  Design your framework using aluminium strip accessories.</p>	<p>3  A circular saw is recommended for cutting/resizing panels.</p>
<p>4  Position framework and screw onto desired surface, thereafter apply to desired wall in either a horizontal or vertical orientation as preferred.</p>	<p>5  Position panels between aluminium spacers. Glue down for additional support using our quick nail free Deckz & Wallz adhesive.</p>	<p>6  On the Elementz Flat Range if aluminium strips are not used make use of a filler to conceal the gap between the two panels.  For corners, grooves make use of our corner joiner to end off your design.</p>

INSTALLATION GUIDE

Indoor Wall Panels - Art Blockz

Equipment Needed



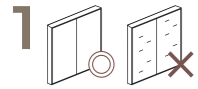
Circular Saw



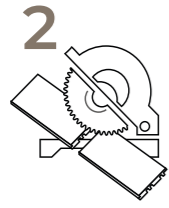
Tape Measure



Nail Free Glue



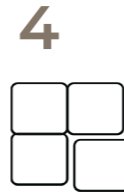
1
Preparation of surface:
A plastered or plywood
surface is suggested
for panel installation.
Ensure that wallpapers
are removed prior to
installation.



2
A circular saw is
recommended for
cutting/resizing panels.

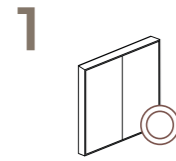


3
Thereafter apply our quick
dry, nail free Deckz & Wallz
adhesive to the back of
the panel surface.



4
Ensure that you cut and paint
the panels before application
to the wall.
Apply to desired wall in
either a horizontal or vertical
orientation as preferred.

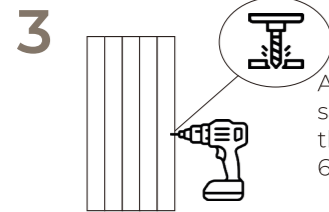
Indoor Wall Panels - Acousticz



1
Preparation of surface:
A plastered or plywood
surface is suggested
for panel installation.
Ensure that wallpapers
are removed prior to
installation.



2
A circular saw is
recommended for
cutting/resizing panels.



3
Attach to the wall by
screwing the panel on
the felt fabric slat at every
600mm intervals.



4
Repeat until completed.

INSTALLATION GUIDE

Interior Mouldingz - Chair Railz

Equipment Needed



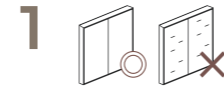
Circular Saw



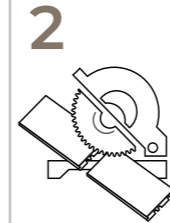
Tape Measure



Nail Free Glue



1
Preparation of surface:
A plastered or plywood
surface is suggested
for panel installation.
Ensure that wallpapers
are removed prior to
installation.



2
A circular saw is
recommended for
cutting/resizing panels.

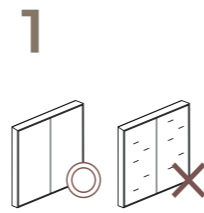


3
Thereafter apply our quick
dry, nail free Deckz & Wallz
adhesive to the back of
the panel surface.

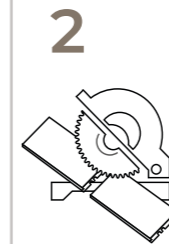


4
Apply to desired wall &
ceiling in either a horizontal
or vertical orientation as
preferred. Pat gently to fit the
wall surface.

Interior Mouldingz - Light Mouldz



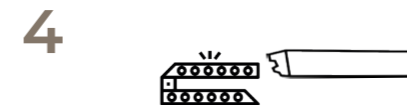
1
Preparation of surface:
A plastered or plywood
surface is suggested
for panel installation.
Ensure that wallpapers
are removed prior to
installation.



2
A circular saw is
recommended for
cutting/resizing panels.



3
Thereafter apply our quick
dry, nail free Deckz & Wallz
adhesive to the back of
the panel surface.



4
Install the light strip
into the recess of the
light mould.



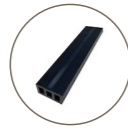
5
Apply to desired wall &
ceiling in either a horizontal
or vertical orientation as
preferred. Pat gently to fit the
wall surface.

INSTALLATION GUIDE

Composite Decking



Outdoor Panelling



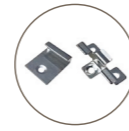
Keel



Side Cover



Drill



Clips



Expansion Screws

- You will need a drill, an electric screwdriver and a saw in addition to the accessories provided during installation. Ensure that you work on a level/stable surface that is solid enough for inserting expansion screws
Pre-drill the area on the ground before driving in expansion screws. Make sure that the allocation for holes on the keels match the predrilled area on the ground.
- The recommended space between keels are 400mm.
- Insert a starter clip at the edge of each keel with a stainless-steel screw.
- Slide the first decking board against the starter clip firmly.
- Thereafter install spacer clips to the other edge of the board and fix with stainless steel screws.
- Make sure the screw holes are aligned with the centre of the keel. Slide decking boards against spacer clips and install the rest of the boards in the same manner as step 5.
- Joints need to be positioned over the centre of the keel or add extra keels to support joints.
- Decking can be completed by installing the coordinating mould side cover along edges.

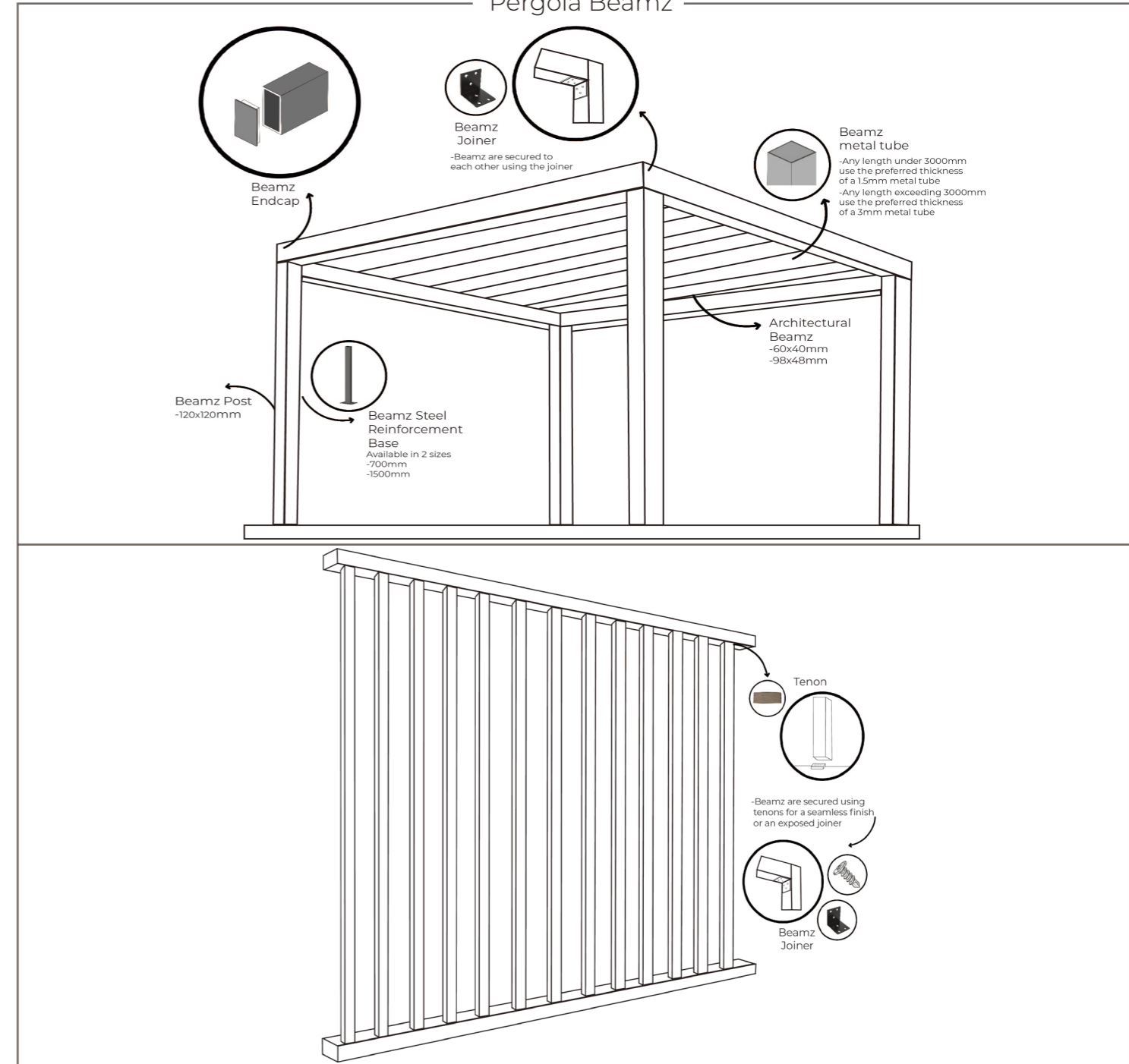
Outdoor Wall Panelling - With Keels

Ensure that panels are pre-drilled before securing with the necessary screws to prevent damage to the panels

- Place at a desired level.
- Position keels 400mm apart horizontally.
- Mount the fitting using stainless steel screws.
- Insert a starter clip at the edge of each keel.
- Slide the first wall panel along the starter clip firmly.
- Thereafter install the rest of the panels by aligning and clipping it into the first wall panel.
- Finish by securing edging using stainless steel screws.
- Final Result.

INSTALLATION GUIDE

Pergola Beamz



WARRANTY INFORMATION

For the specified warranty period indicated the DECKZ & WALLZ warranty applies to the original purchaser of the DECKZ & WALLZ products under the following pre-requisites:

- Installation under normal and proper service conditions.
- Installation should be in accordance with DECKZ & WALLZ written instructions.
- The consumer/contractor acknowledges that DECKZ & WALLZ composite decking and accessories are not structural lumber and therefore may not be used as such.
- For purposes of the warranty, the "original purchaser" means the individual or individuals who were the owners of the specific property upon which DECKZ & WALLZ product was installed and should hold a Proof of Purchase from the installer.
- The installation has to be done over solid and secure frame or concrete structure. DECKZ & WALLZ will not be held accountable for incorrect installation/ structural issues.

When used and maintained in an above-ground application, the product shall remain free from material manufacturing defects and will not crack, splint, delaminate, rot, or suffer structural damage from fungal decay. However, a natural amount of fading within a settling period due to sun exposure, is to be expected. This is a standard across all composite outdoor products.

It is essential that Outdoor Wall Panels are predrilled before inserting screws. Failure to do so will result in possible cracking of the panel edging which will not be covered by our warranty. A rotary drill bit is recommended so as to not crack or damage the panel. Over tightening will also result in the panel being compromised.

The term of the warranty for DECKZ & WALLZ composite decking and outdoor wall panels is 8 years i.e. from the date of original purchase provided that the purchaser maintains ownership of the identified property upon which DECKZ & WALLZ products has been installed.

Percentage recovery based on number of years used:

For Residential Claims	
From Date of Purchase	Percentage Recovery
0-2 Years	100%
2-3 Years	75%
3-4 Years	50%
4-5 Years	25%
5-7 Years	15%
7-8 Years	10%

Claim Procedure:

In order to proceed with a warranty claim against DECKZ & WALLZ, the purchaser must contact DECKZ & WALLZ (warranty@deckzandwallz.co.za) and attach photos of the defective product together with the proof of purchase.

All warranty claims must be received by DECKZ & WALLZ within the applicable warranty period. No warranty will be given if claims are submitted later than 30 days after any discovery of a possible defect of the DECKZ & WALLZ product.

Limitations:

DECKZ & WALLZ does not warrant against and is not responsible for any condition attributable to, in whole, or in part, to:

- Improper installation of DECKZ & WALLZ products.
- Failure to abide by DECKZ & WALLZ's written instructions.
- Defects in or failure arising from decking structure resulting from water caused by improper installation, workmanship, maintenance or repair.
- Any act of God (including, but not limited to, flooding, hurricanes, tornadoes, wind, earthquakes, lightning, hail, etc.)
- Damage resulting from casualty, fire or exposure to heat sources such as cooking devices or retro-reflective surfaces.
- Climate change, irregular environmental conditions, static electricity or any cause

beyond the control of DECKZ & WALLZ. Intentional damage by sharp tools or harshly abrasive chemicals. Only DECKZ & WALLZ outdoor decking and outdoor wall panels are covered by the warranty clause. Indoor wall panels do not fall within a warranted category. The cost of uplifting and reinstallation will not be covered by the Warranty. Only faulty panels will be replaced. The Warranty does not cover any cartage costs for the replacement products supplied to the purchaser.

All warranties provided by DECKZ & WALLZ, whether expressed or implied, are void if any one or more of the following instances occur:

- The DECKZ & WALLZ product is not installed, maintained and/or used strictly in accordance with DECKZ & WALLZ written instructions.
- The DECKZ & WALLZ product is not installed in accordance with all applicable laws, codes and regulations.
- The intentional or unintentional misuse of the DECKZ & WALLZ product, whether foreseeable or unforeseeable.
- The failure of the purchaser to properly and/or timely maintain or repair the DECKZ & WALLZ product.
- The failure of the purchaser to provide timely notice to DECKZ & WALLZ regarding any defect of the DECKZ & WALLZ product - (must be reported within a 30-day period from identifying the fault).
- Failure to provide the company with a dated proof of purchase.



SCAN ME

FOR FULL WARRANTY INFORMATION

OR visit: <https://deckzandwallz.co.za/warranty-information/>



Installation Guide



Catalogue

